

Industrial purchasing service

Purchasing and procurement service / Industrial purchasing service
Procurement of products in Germany and abroad

ISRR
Industrie
Service
Rhein-Ruhr



We take on the purchasing service covering the complete handling of your requirements for industrial goods and materials including logistics.

We support your purchase with the following services:

- KI-supported global supplier selection
- Price comparison for optimal supply chains and quality
- Use of international platforms
- Participation in tenders
- Technical expertise for complex parts/components

Handling will take place on behalf of our customers for own account including the complete assumption of the purchasing risk.

On behalf of our industrial customers, we take on the procurement of the following goods and materials:

- Capital goods according to customer specifications
- Raw materials / semi-finished products
- Consumer goods for production
- Welded assemblies
- Drawing parts on demand
- Product improvement with our own engineering

Our worldwide activities result in cost-optimized solutions for our customers with demonstrably economic success.

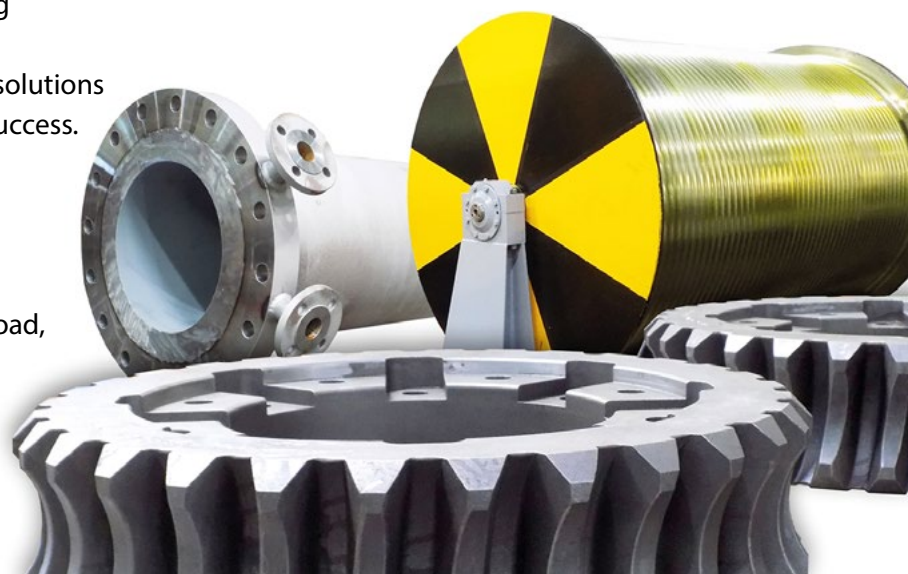
Our procurement strategy is based on a data-supported purchasing and procurement process.

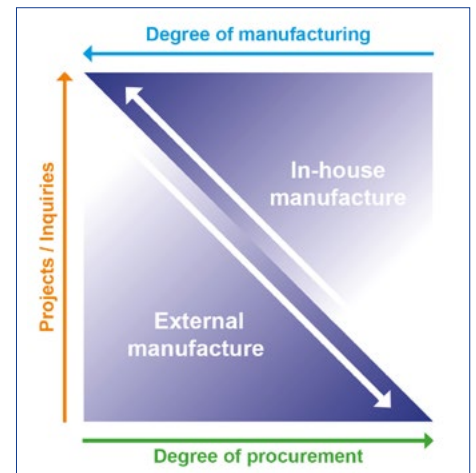
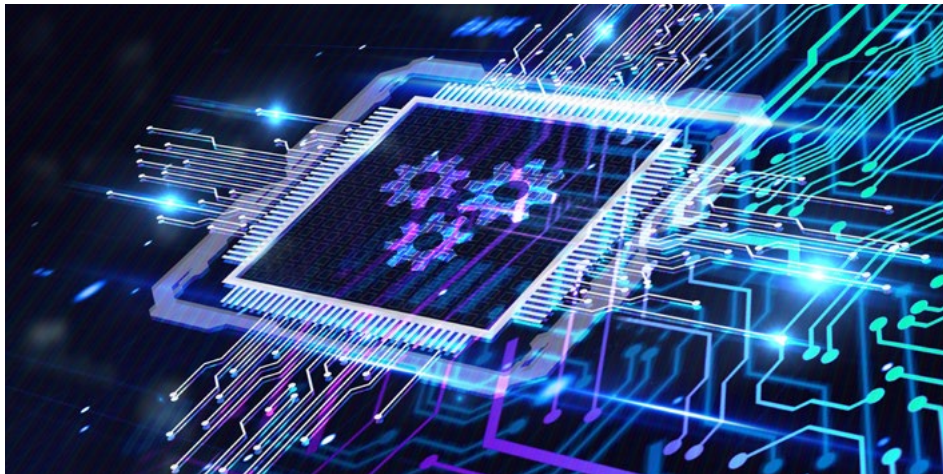
When procuring products from Germany and abroad, we guarantee the desired quality by using our local quality management systems (see our certificates).

Examples of industrial purchasing

- Components for machinery and plant engineering
- Welded assemblies, machine frames
- Railway technology
- Crane and lifting technology
- Rope drums weighing up to 25 t
- Rope pulleys
- Rolls/rollers for belt systems
- Components of mill technology
- Forgings
- Machined castings
- Mould tubes for continuous casting plants
- Wear parts optimized in terms of service life
- Bearings
- Special roller bearings up to an outside diameter of 1800 mm

This includes the certification of our suppliers according to our quality standards. Technical acceptance of our products abroad is carried out by internationally recognized testing and classification companies such as:





Intelligent value chain with data-based algorithms

Our purchasing and procurement service is based on the analysis of costs and supply chains for approx. 6900 procurement processes and offers over the past 8 years.

The basis of data is the global, collaborative procurement of products in the following categories

- Welded structures (machinery and plant engineering, steel construction)
- Roll and roller bodies
- Machine components
- Components of mill technology
- Rail components

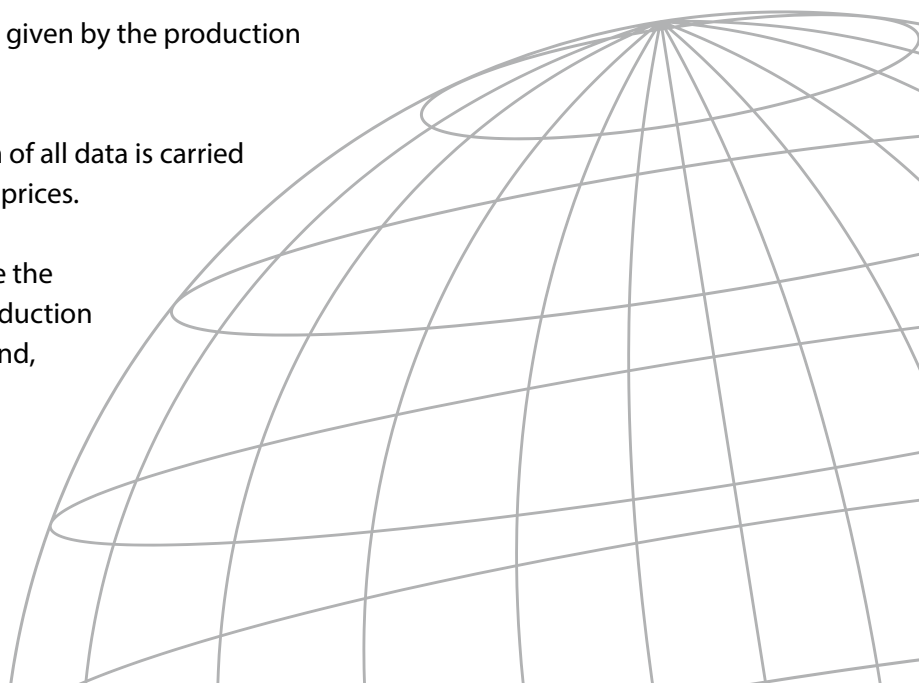
Our procurement processes are based on various algorithms for our global supplier selection and for determining all manufacturing costs for the requested products.

The original basis of data consists of information given by the production drawings and the material lists/bills of material.

The evaluation of the results from the evaluation of all data is carried out according to the current wages and material prices.

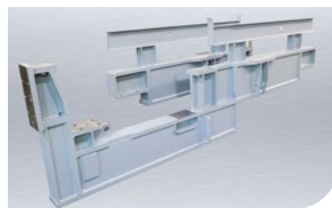
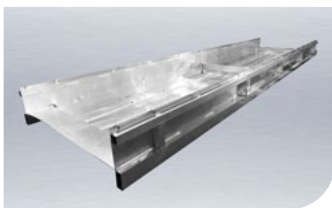
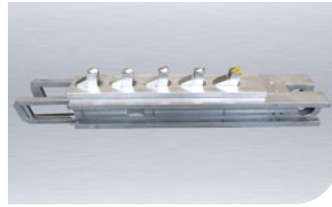
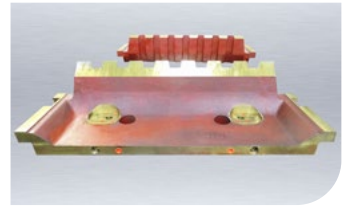
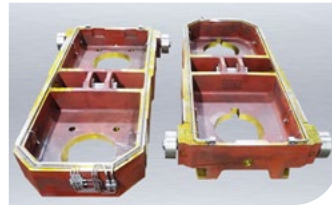
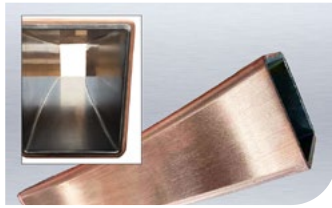
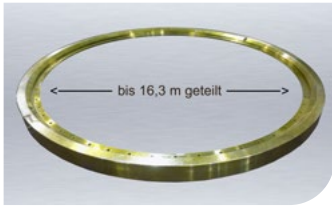
With our purchasing service for industry, we have the necessary know-how, e.g. to analyse existing production programs for welded assemblies with our tools and, if necessary, to submit technical and commercial procurement offers to our customers.

The basis of our purchasing and procurement service is a procurement matrix that uses data to determine the proportions of in-house and externally manufactured products.

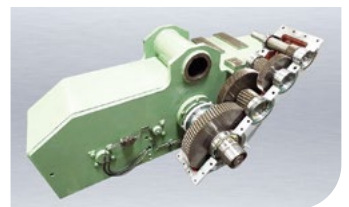
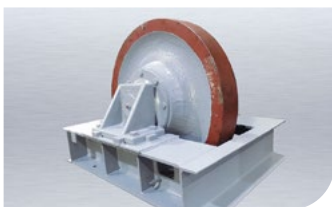
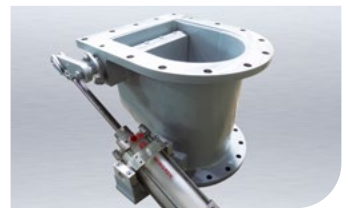


Examples industrial purchasing service

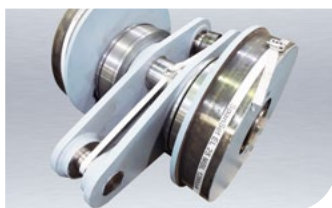
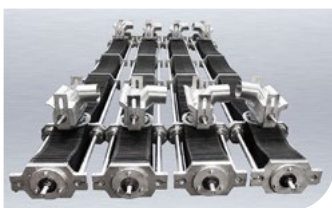
Plant engineering



Machinery engineering



Mill technology



Railway technology



Fields of work:

New part manufacturing

- ▶ Metal roller cores
- ▶ Welded assemblies
- ▶ Lifting equipment

Engineering

- ▶ Project engineering and development

Industrial purchasing

- ▶ Strategic procurement of products in Germany and abroad

Maintenance service

- ▶ Roller / roll service
- ▶ Maintenance of crane wheels and rail wheels
- ▶ Industrial maintenance for machinery and plant engineering
- ▶ Industrial maintenance for steel plant components
- ▶ Repair welding



Zertifizierungen:

Quality management ISO 9001 : 2015

Certificate of TÜV Saarland

WPK-Certificate acc. to EN 1090-1,-2,-3 description scope of supply and CE - marking

Certificate of DVS ZERT

Welding specialist company DIN EN ISO 3834-2 – Mechanical engineering

Certificate of DVS ZERT

Welding specialist company DIN EN 15085-2 CL1 – Rail vehicles including maintenance DIN 27601-6

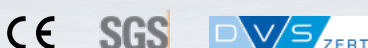
Certificate of DVS ZERT

Welding certificate EN 1090-1/-2/-3 EXC 3 steel/ or aluminum structures

Certificate of DVS SLV Duisburg

Employer of the future

Certificate of Deutsches Innovationsinstitut für Nachhaltigkeit und Digitalisierung GmbH



Certificates can be viewed at: www.isrr-gmbh.de/certificates



Industrie Service Rhein-Ruhr GmbH

Hülsermannshof 9a
D-47179 Duisburg

Phone: 0203-4 85 51-0
Fax: 0203-4 85 51-51

info@isrr-gmbh.de
www.isrr-gmbh.de